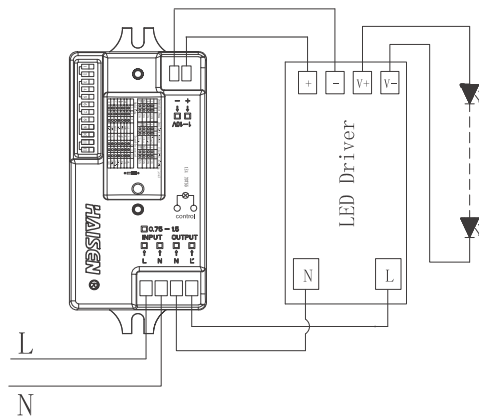
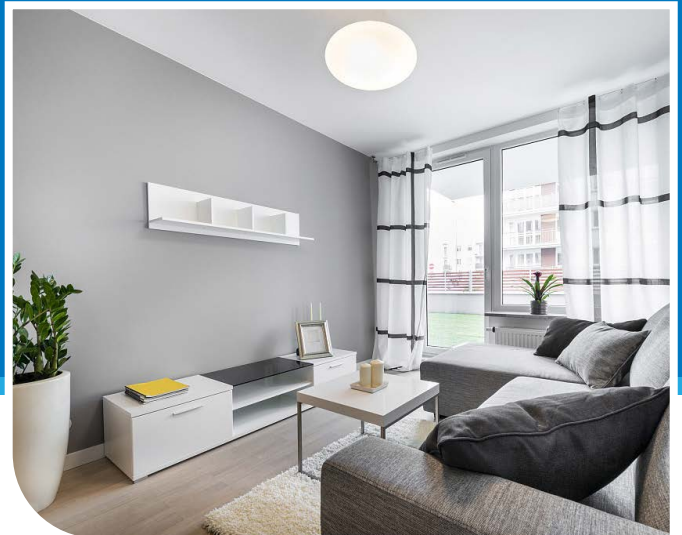


# Bi-level/dimmable control HD01V



On/off control



Stand-by period



Detection area



Stand-by dimming level



Hold-time



5 years

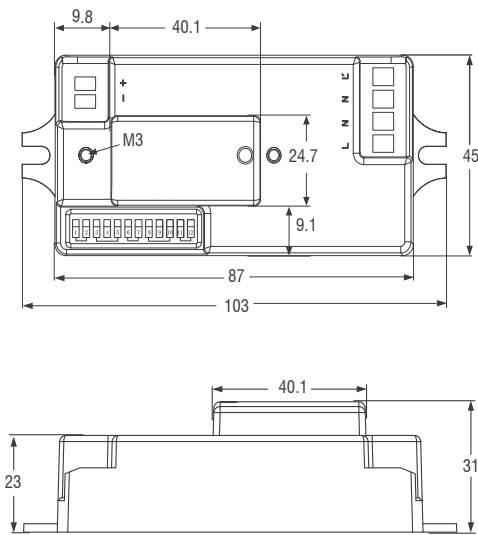


Daylight sensor

## 01 Technical data

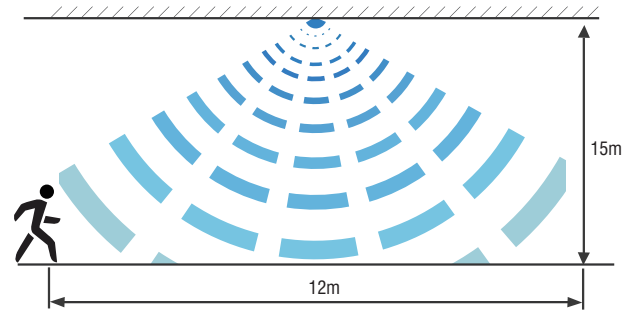
Operating voltage	220~240 VAC 50/60Hz
Switching capacity	Max.400W(Control gear) Max.800W(Incandescent lamp)
Standby power	≤ 1W
Detection area	10%/50%/75%/100%
Hold-time	5s/30s/1min/5min/10min/20min/30min
Stand-by period	0s/10s/1min/10min/30min/1h/∞
Stand-by dimming level	10%/20%/30%/50%
Daylight threshold	2Lux/10Lux/50Lux Disable
Microwave frequency	5.8GHz±75MHz
Microwave power	<0.3mW
Interfaces	6-pole pluggable clamp terminal (L,N,N',L',1-10v+,1-10v-) for 1.5mm <sup>2</sup> cable
Mounting height	Max.15m(ceiling mounted) Max.3m(wall mounted)
Detection range	Max.12m(ceiling mounted) Max.20m(wall mounted)
Operating temperature	-20°C~+60°C
IP rating	IP20
Size	103X45X31mm

## 02 Mechanical structure(mm)

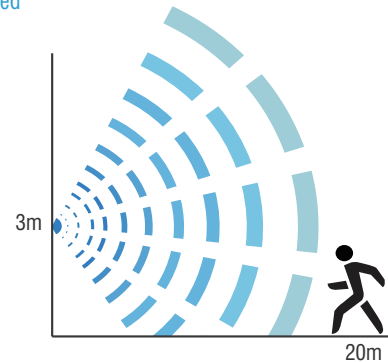


## 03 Detection coverage

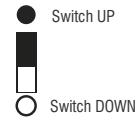
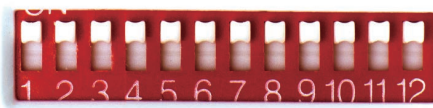
### Ceiling Mounted



### Wall Mounted



## 04 Settings



●	●	100%
●	○	75%
○	●	50%
○	○	10%

### Detection area

Detection area means detection coverage. It can be adjusted by combining DIP switches for specific application.

●	●	●	5s
○	●	●	30s
○	○	●	60s
○	○	○	5min
○	○	○	10min
○	○	○	20min
○	○	○	30min

### Hold-time

Hold-time means the time period the light will be ON after the last detection.

●	●	Disable
●	○	50lux
○	●	10lux
○	○	2lux

### Daylight threshold

Daylight sensor prior to motion sensor. Set threshold for specific needs. If Disable, only motion sensor works.

●	●	●	0s
○	●	●	10s
○	○	●	1min
○	○	○	10min
○	○	○	30min
○	○	○	60min
○	○	○	∞

### Stand-by period

This is the time period the light keeps dimming down after the last detection.

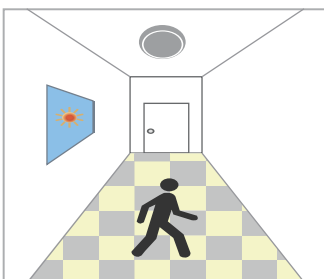
●	●	10%
●	○	20%
○	●	30%
○	○	50%

### Stand-by dimming level

This is the dimming level the light keeps during stand-by period.

## 05 Application

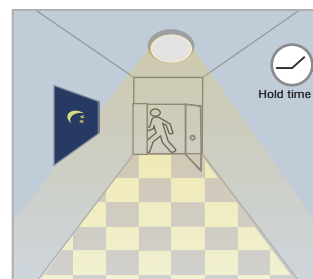
Function Demo - Dimmable control/Corridor function



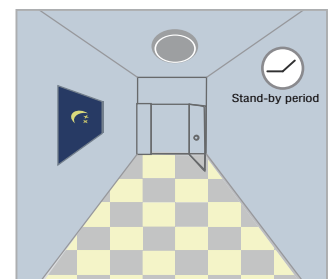
With sufficient daylight, even when motion detected, light remains OFF.



With insufficient daylight, when motion detected, light ON.



After last detection, the light will be dimmed down to the stand-by dimming level (10%, 20%, 30% or 50%) after hold time.



After the stand-by period, light OFF.